

Board of Directors

Halley Page, President
Mack Duncan, Vice President
Alison Huff, Treasurer
Katherine Edison, Secretary
Emily Carr
Scott Collins
Manita Dean
Larry Dendy
Susie Haggard
Tammy Kemper
Gwen Lott
Patrick Metcalf
Carmen Miranda
Mary Lou Neuhauser
Mark Ralston
Mike Roden
Board Member Emeritus
Dr. Walt Cook

Staff

Katie Eckardt
Assistant to the Board of Directors

ACC Liaisons

Randy Smith
Facility Supervisor
Kate Mowbray
Naturalist
Michelle Cash
Naturalist
Carmen Champagne
Program Leader
Rhonda Smith
Recreation Assistant
Brian Seagraves
Arts & Nature Division Administrator
Kent Kilpatrick
Interim Director, Leisure Services

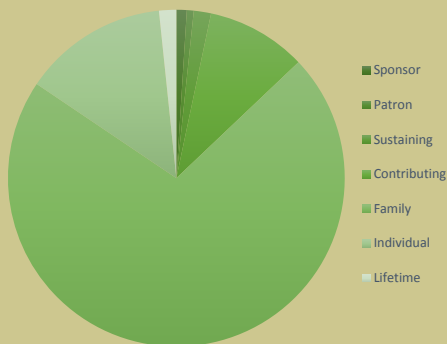
Ex-Officio Members

Mike Hamby
ACC District 10 Commissioner
Amy Peacock
Science Coach, CCSD
Bynum Boley
Assistant Professor, UGA

Thanks to our Corporate Partners

Barnett Tae Kwon Do
Classic Race Services
Collins/Moody
Colonial Pipeline
First American Bank
Five Points Eye Care
Flagpole
Georgia Power
Jackson EMC
Jittery Joes
Oconee Rivers Audubon Society
Terrapin Beer Company

302 Members



Sandy Creek Nature Center, Inc.
205 Old Commerce Road
Athens, GA 30607
706-613-3615 x 235

www.sandycreeknaturecenterinc.org

2017 Annual Report



Sandy Creek Nature Center, Inc.

To support, promote and protect the environmental education
and preservation efforts of Sandy Creek Nature Center.



2016-2017 Year in Review

From the President: by Halley Page

For over 40 years, The Board of Directors' mission has been to support, promote and protect the environmental education and preservation efforts of Sandy Creek Nature Center. Thanks to you, our members, for joining us in this mission.

With your support, we are able to fund property improvements and special projects such as the Managed Forest. As we witness the restoration of forest habitat where chestnut and pine trees have been planted by volunteers, there have been increased sightings of previously rare species such as Mississippi Kites, Red-headed Woodpeckers and Kestrels.

Each year, over 55,000 people enjoy Sandy Creek Nature Center by visiting with family or friends, attending with field trips, enjoying programs or participating in special events or camps. We hope that you and your family will continue to enjoy the ADA Boardwalk Trail and the Education and Visitor Center- improvements supported by your membership.

We ask that you continue to support the Nature Center whether it be by renewing your membership, making a donation or volunteering your time.

Thank you!

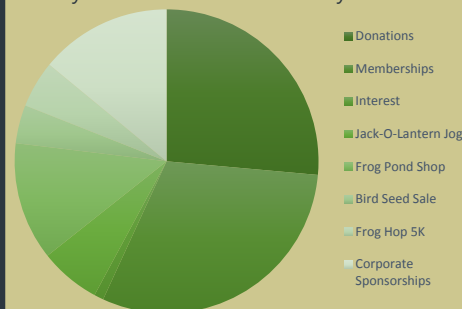
Halley Page

Quick Facts

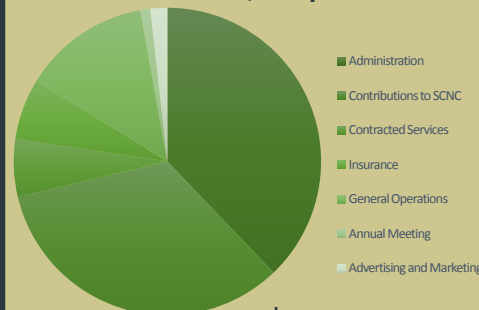
- The Nature Center was founded in 1973 by 11 concerned citizens who feared the property would be developed commercially.
- Sandy Creek Nature Center encompasses 225 acres of ecologically diverse uplands and wetlands at the confluence of Sandy Creek and the North Oconee River.
- The center includes a 15,000-square-foot Education & Visitor Center with five interactive learning centers, a planetarium, classrooms, meeting rooms, live animal displays and a gift shop.
- The site includes the historic ruins of a brick factory and an 1815 log house.
- Every year, SCNC completes an educational services contract with Clarke County School District, providing programming for over 4,000 students.

Finances

The staff and operations of Sandy Creek Nature Center are funded by Athens-Clarke County Department of Leisure Services. As the founding non-profit support organization, Sandy Creek Nature Center, Inc. raises funds to support the mission of the Nature Center. These charts show where funds come from and how they are spent. Your support makes it possible for the Board to continue to augment funding for the Nature Center and to provide Sandy Creek Nature Center with expertise and volunteer support that enhances its mission and ability to serve the community.



Income = \$49,057.38



Expenses = \$39,573.09

