

Board of Directors

Mack Duncan, President
Katherine Edison, Vice President
Alison Huff, Treasurer
Tammy Kemper, Secretary
Halley Page, Past President
Emily Carr
Scott Collins
Gary Crider
Manita Dean
Larry Dendy
Susie Haggard
Ted LaMontagne
Gwen Lott
Carmen Miranda
Mary Lou Neuhauser
Mark Ralston
Mike Roden
Tom Shelton
Susan Williams

Board Member Emeritus
Dr. Walt Cook

Staff

Katie Eckardt
Assistant to the Board of Directors

ACC Liaisons

Randy Smith
Facility Supervisor
Kent Kilpatrick
Director, Leisure Services

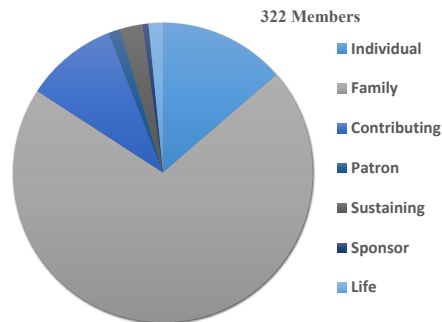
Ex-Officio Members

Mike Hamby
ACC District 10 Commissioner
Amy Peacock
Science Coach, CCSD
Bynum Boley
Assistant Professor
Warnell School of Forestry and Natural
Resources, University of Georgia

Thanks to our Corporate Partners

Barnett Tae Kwon Do
Classic Race Services
Collins/Moody
Colonial Pipeline
First American Bank
Five Points Eye Care
Flagpole
Georgia Power
Jackson EMC
Jittery Joes
Oconee Rivers Audubon Society

Membership



205 Old Commerce Road
Athens, GA 30607
706-613-3615



2018 Annual Report



Our Mission:

“To support, promote and protect the environmental education and preservation efforts of Sandy Creek Nature Center.” We work to ensure that natural science and environmental education opportunities are available to everyone in our local and regional community.

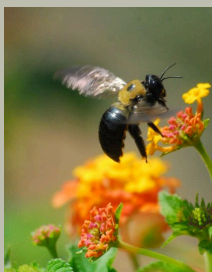
Our History:

Sandy Creek Nature Center, Inc. was founded in 1973 as Northeast Georgia Nature Center, Inc. by a committed group of 12 Athens-area educators, scientists, and concerned citizens who saw a need for stronger environmental education in the area.

In 1981, the board deeded the Nature Center to Clarke County, which assumed responsibility for its day-to-day operations and funding. This partnership continues today, with the Athens-Clarke County Unified Government providing staff and the majority of funding, while Sandy Creek Nature Center, Inc. continues to act as a liaison between the staff and the community, a partner in ongoing development, an advocate for the nature center and environmental protection, and a source of supplemental funding.

Contributions to the Nature Center since 2010=\$345, 214

Interactive exhibits	\$109,010
Managed Forest Project	\$55,100
Planetarium upgrades	\$52,735
ADA trail extension	\$44,305
Carpeting	\$25,000
Materials & supplies	\$15,022
HVAC components	\$8,500
Hyla production	\$8,500
Dues & fees	\$4,854
Building improvements	\$3,974
LED lights	\$3,965
Pavilion cabinets	\$3,540
Pavilion upgrades	\$3,000
Special Projects	\$2,597
solar heater installation	\$1,925
Exhibit hall	\$1,448
Bug sculptures	\$700
Magnolias	\$540
Skyline painting	\$500



Our Future:



Backyard Discovery Zone

With the overwhelming popularity of the exhibit hall, it has become clear that additional play space is a necessity. Thus, Sandy Creek Nature Center, Inc. is committed to raising funds to construct an outdoor play and exploration area which will be located in our current garden area, just behind the Education and Visitor Center. This area will be available for independent visitors and for use by school groups, camp groups and facility programs. Our goal is to construct an active space close to our building in order to create a safe outdoor experience focusing on nature.

Features will include low-impact play surfaces, forest trails, seating for adults and space for strollers, shade, natural boundaries and a variety of natural structures for open-ended free play.

Two preliminary basic concept plans and a professionally prepared site survey have been completed. Koons Environmental Design, an Athens company, has been retained to develop a detailed concept plan within 90 days. A final plan will then be prepared.